

The IR Roller and IR Tube.

OZ Roll™ is proud to introduce yet another revolutionary system to the Australian shutter market, designed specifically for manual tape controlled shutters. The all new IR Roller and IR Tube completes the products used for the in reveal side entry system.

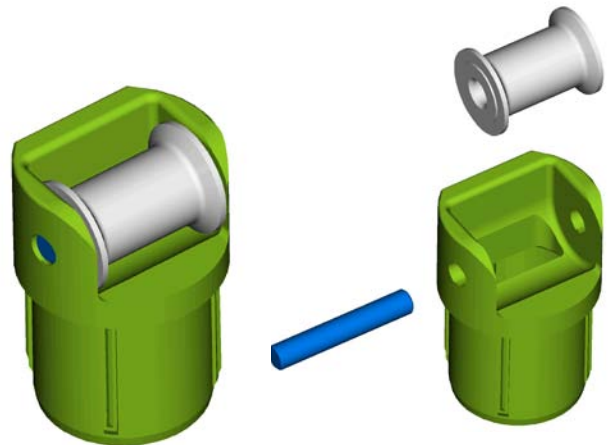
The IR Roller.

The all new IR (in reveal) Roller has been designed with similar principles as the Insert Roller, utilising the flanged roller to minimise wear on the control tape.

The tube part of the roller has been designed to fit neatly into the IR Tube and has four raised ridges that prevent the roller from rotating after installation.

The IR Roller is in stock now and will replace the old style cavity roller as of Monday 20 March 2000. The IR Roller is available in White only and the OZ Roll™

Part Number is: 13.250.401.



The IR Tube.

The IR Tube is made from extruded PVC and has been designed to minimise the hole size needed. The tube has eight keyways moulded into it that will correspond with both the Insert Roller and the IR Roller. This system of corresponding keyways and ridges has been developed to prevent any of the components rotating after installation. The keyways will allow for rotation in 15° increments as well as providing a positive alignment method for the corresponding rollers.

The IR Tube is in stock now and will replace the old style cavity tube as of Monday 20 March 2000. The IR Tube is available in White only and in two specific types. The standard supply type would be in cut lengths of 250mm and the OZ Roll™ **Part Number is: 13.246.401.**

The IR Tube can also be ordered in 2 metre lengths and the OZ Roll™

Part Number is: 13.247.401



Installation Tip.

When the IR Tube is installed, it should be cut as short as possible whilst maintaining clearance for the control tape. Measure the thickness of the wall through the hole and cut the tube 10mm shorter (for a standard install).

This will allow for the most obtuse angle on the control tape. The hole should also be as close as possible to the roller shutter or SE roller.

As a point of interest, the pull weight on the control tape for a shutter approximately 1.8 x 1.8m on a side entry in reveal installation should be approximately 10 kg's. Should the IR Tube be cut as little as 20mm too long the pull weight on the control tape can increase to an amazing 16 kg's. That's a 60% increase in weight acting on every component in the system!