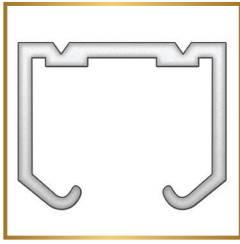
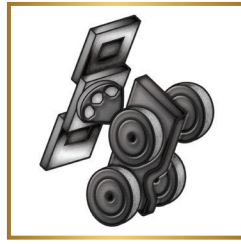


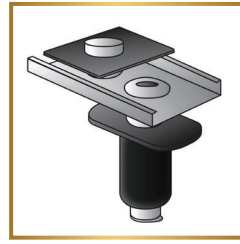
BI-FOLD COMPONENTS



TOP TRACK



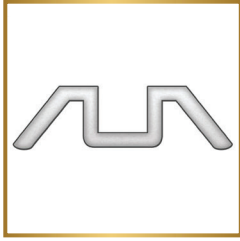
CARRIER WHEELS



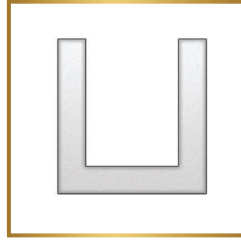
TOP PIVOT



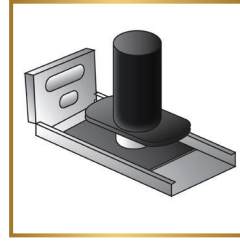
SPRING LOADED
BOTTOM GUIDE



BOTTOM TRACK



RECESSED

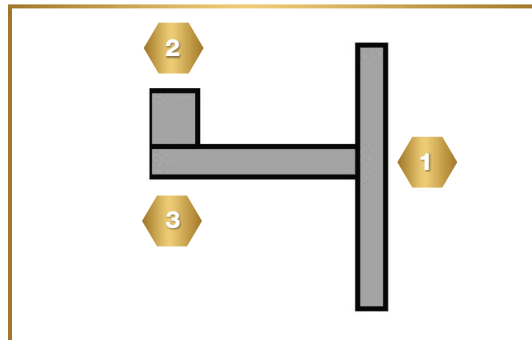


BOTTOM PIVOT

BI-FOLD FASCIA & PELMET

TYPE 1

- 1** Pelmet for Bi-fold Face Fit.
Facia 100mm high x 10mm.
A 45mm deduction will be made for
the roller.
- 2** 42 x 42 Mounting Block
- 3** 19mm Headboard



TYPE 2

- 1** Pelmet for Bi-fold Reveal Fit.
Facia 54mm high x 10mm.
A 64mm deduction will be made for
the roller and headboard.
- 2** 19mm Headboard

