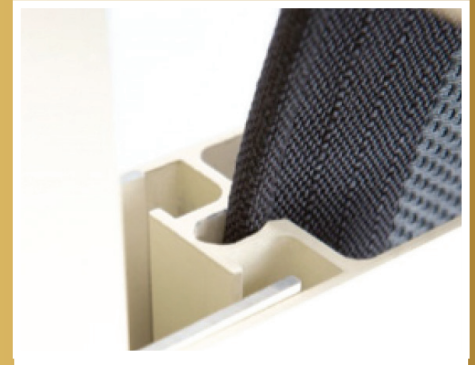


The tracking system by Slidetrack is a patented extrusion, engineered to restrain outdoor blind skins with welded splines. The unique channel shape was designed specifically to encompass and guide the spline within a secure channel.

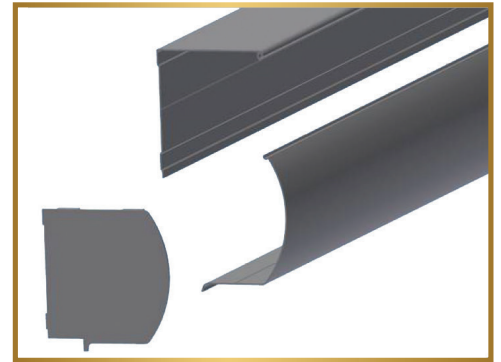
These tracks offer not only strength and durability, they also provide an attractive finish by concealing the spline within the tracks and hiding the weld from view when installed. These tracks can be used with a range of guide and boxing options to suit a huge variety of shading applications.



BOXING

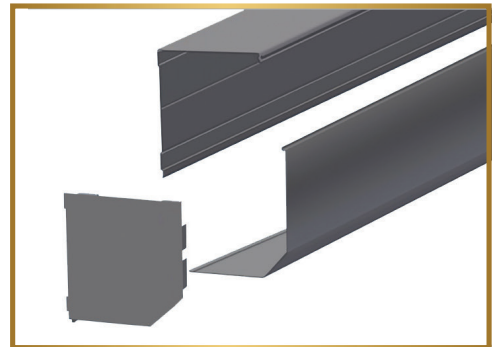
145mm EXTRUDED ALUMINIUM HEAD BOX

This unique head box is a two-piece pelmet produced with extruded aluminium and finished with specialised end caps. The fully enclosed head box offers a smooth shape for an attractive finish, with industry leading strength due to design and thickness of material. Tested on blinds as wide as 6600mm, this is the ideal option for wide spans and for powder coating of special colours.



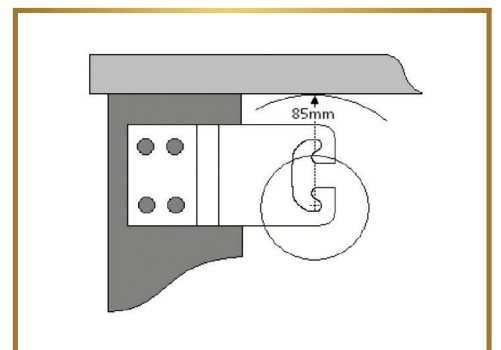
150mm ROLL FORMED ALUMINIUM HEAD BOX

The roll formed head box is a two-piece pelmet, commonly used for roller shutters, slightly modified to suit outdoor blinds. Ozroll's square roller shutter end plates have been adapted to support the unique Slidetrack top tube, creating a fully enclosed head box which protects the rolled up skin up to a maximum of 4600mm in width. This boxing offers a professional look at a cost effective price.



BRACKETS

Brackets are available to support the top tube in situations where boxing is not suitable or pricing is prohibitive. The top tube drive and idle ends can be dropped into the brackets, which must be fitted to allow enough room for the fabric to build up around the roll. It is important to consider when selling brackets without boxing that, when the skin is rolled down, there is an open gap left above the top tube.



CHANNELS & TRACKS

STANDARD CHANNEL

The most commonly used channel, at 23mm deep, you simply fix the channel to the application surface & sit tracks in place. Each channel has +/- 5mm built-in adjustment. When happy with the blind's operation, fix track to channel. If surface is square and measured correctly, there should be 5mm of channel visible when looking at the front of the blind.

DEEP CHANNEL

Deep channels are 10mm deeper than standard. Installation method is exactly the same – this channel is simply an option to use for neatly overcoming protruding bricks or copper piping.

EXTRA DEEP (GEARBOX) CHANNEL

21mm deeper than standard. Developed to accommodate the extra width of a gearbox.

EXCESSIVE OUT OF SQUARE

can be accommodated by using a STD channel half height, with a DEEP or EXTRA DEEP for the rest of the height.

ANGLED CHANNEL

For fixing to angled surfaces. Measure using the fabric as your line to the wall (dotted centre line in diagram). Drill a pilot, then a 13mm diameter hole in the flat tube for your driver to fit through. Mount to wall. Place the curved channel over the top, (covering the 13mm holes.) Adjust to required angle and fix to flat tube with rivets or size 10-16x16mm tek screws.

SMALL COLUMN CHANNEL (OR CURVED CHANNEL)

For fixing to columns smaller than 200mm. For larger diameter columns a standard channel can be used. Simply fix to column, taking care not to over-tighten, as this may bend the channel edges out of shape.

FACE FIT CHANNEL

Avoid using 25 x 40 angles when face fixing. The back leg is 40mm wide. When fitting blinds side-by-side two face fit channels can be used back-to-back if the post is 80mm wide or more. Alternatively, use one face fit channel and mount a standard channel to its back.

© Ozroll IP Pty Ltd

