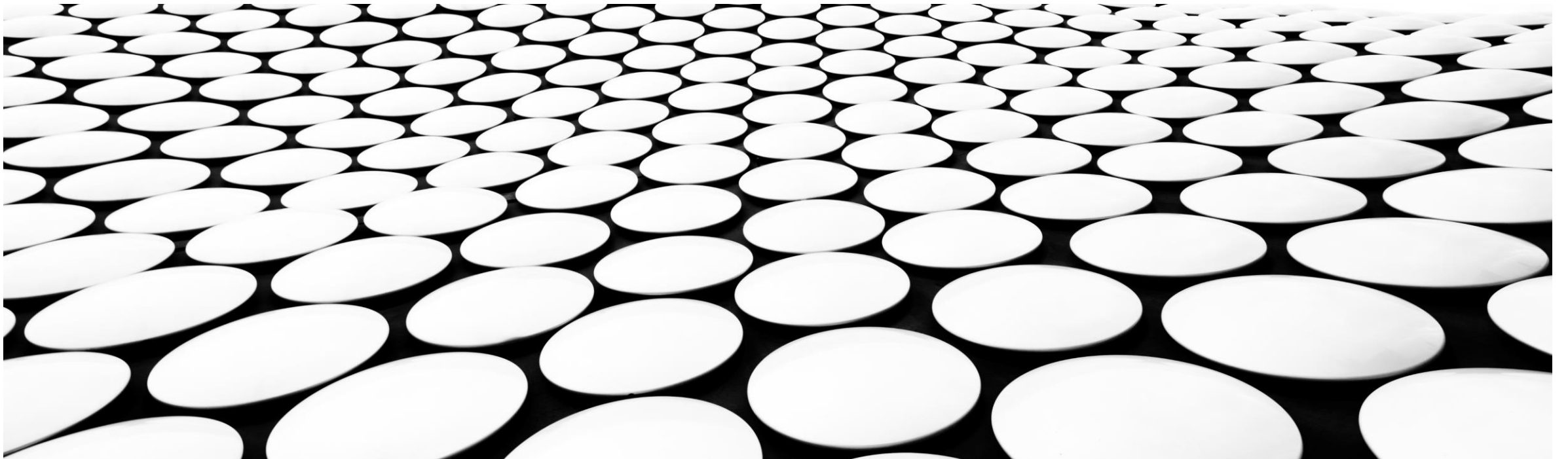


---

# STRAIGHT DROP INSTALLATION

OUTDOOR BLINDS BY OZROLL



## MARK OUT A LEVEL FITTING POSITION

The head box must be fit level for the blinds to operate properly.

If there are multiple blinds adjacent to each other, mark the full length of the application to ensure all blinds will be even.







## UNPACK THE BLINDS

- Each blind will be wrapped, with the skin and axle assembly enclosed inside the head box (as shown above).
- You must remove the axle assembly by releasing the R-Clip (as shown right) from the bracket.







**LIFT THE HEADBOX INTO PLACE AND FIX LEVEL WITH 2  
GOOD FIXINGS EACH END**





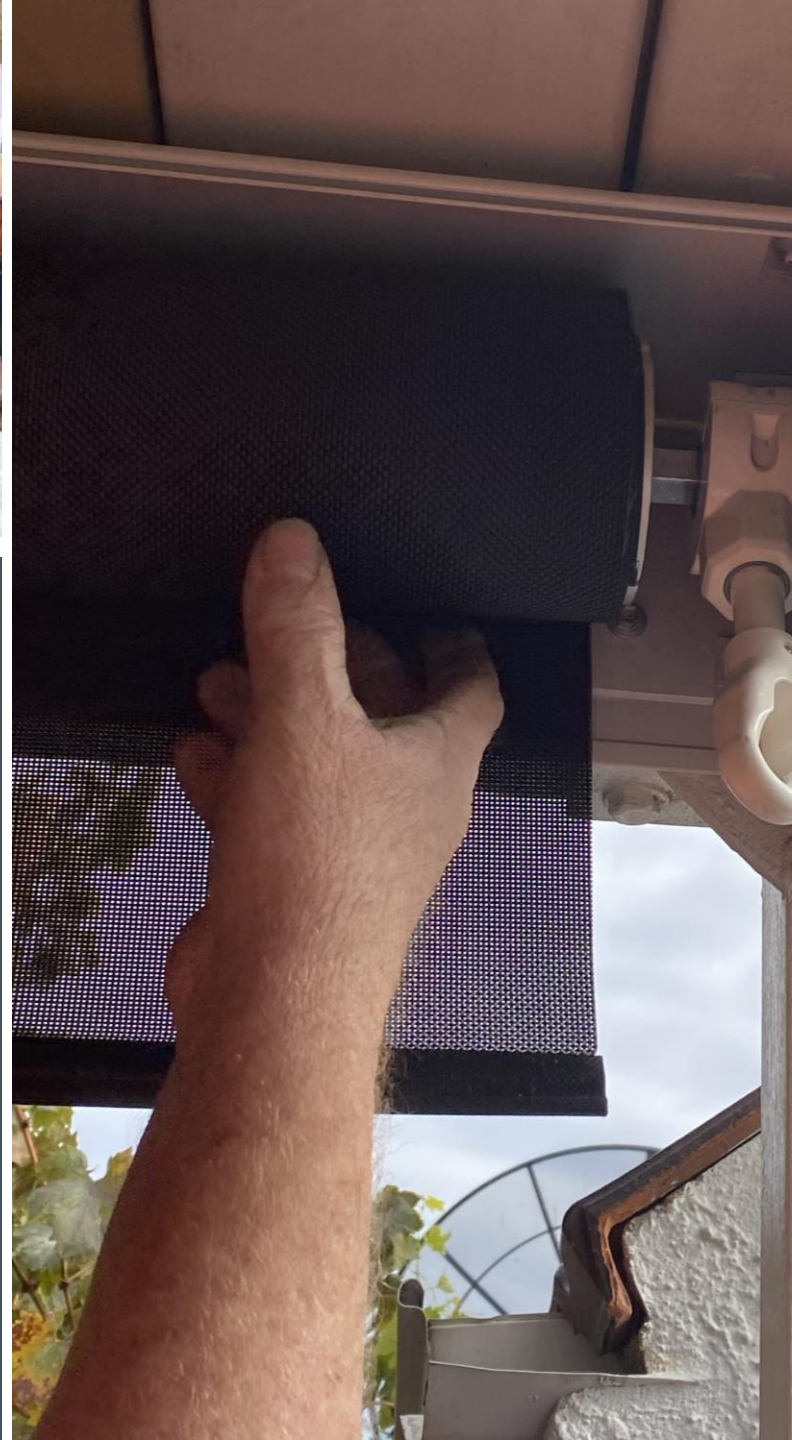
**ENSURE ADEQUATE FIXING POSITIONS AT EACH END AND WHEN OVER 3500MM WIDE, FIT INTERMEDIATE SCREWS TOWARDS THE TOP OF THE HEADBOX**





## INSERT THE AXLE ASSEMBLY INTO THE HEADBOX

- Remove the protective plastic sleeve from the skin
- Fit the axle assembly into the headbox by sliding the gearbox drive in first.





# ENGAGE THE IDLER SHAFT INTO THE BRACKET & FIT THE R-CLIP

YOU MAY NEED TO ROTATE  
THE SQUARE HEAD OF THE  
SHAFT SLIGHTLY





## **ADJUST CIRCLIP IF REQUIRED**

MAKE SURE THE AXLE IS PUSHED FULLY INTO THE GEARBOX. IF THERE ARE SPARE GROOVES SHOWING ON THE IDLER PIN, MOVE THE CIRCLIP OVER TO LIMIT END FLOAT.



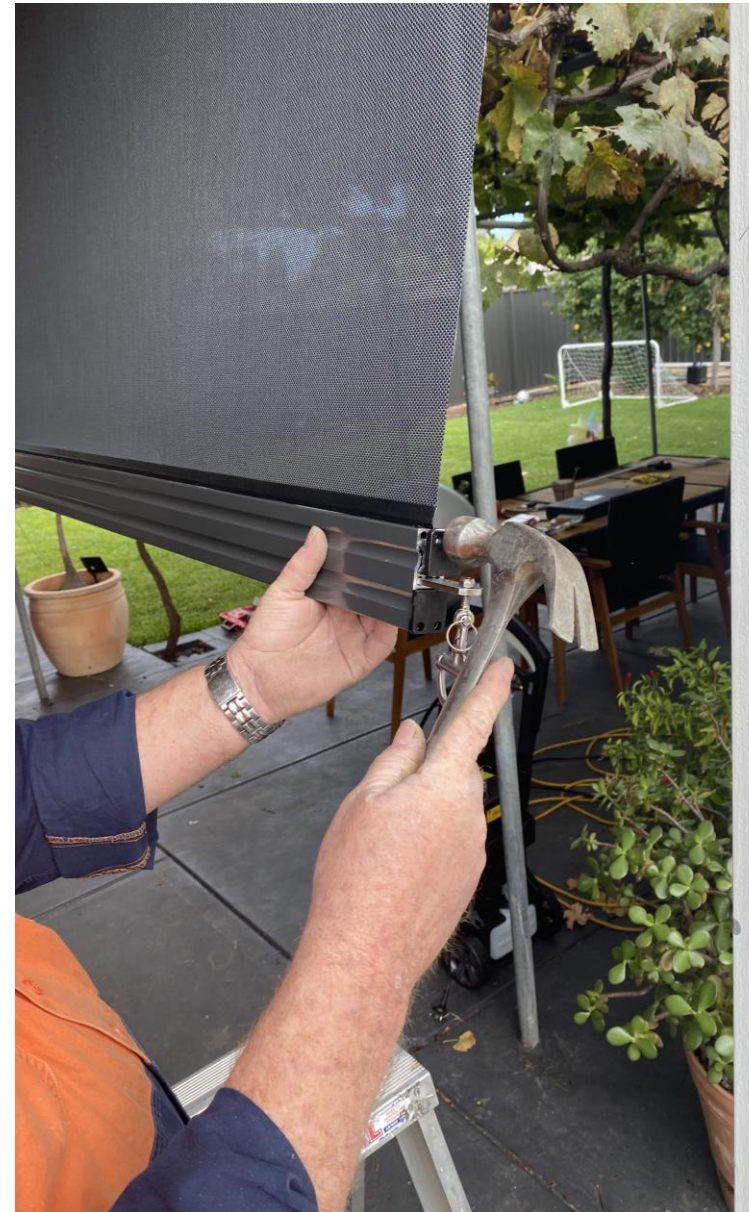


## **SLIDE ON THE BOTTOM BAR**

REMOVE THE TOP BOTTOM BAR CAP FROM ONE END AND SLIDE IT ONTO THE SKINS BOTTOM SPLINE



**RE-FIT THE  
BOTTOM BAR  
END CAP  
SECURELY**



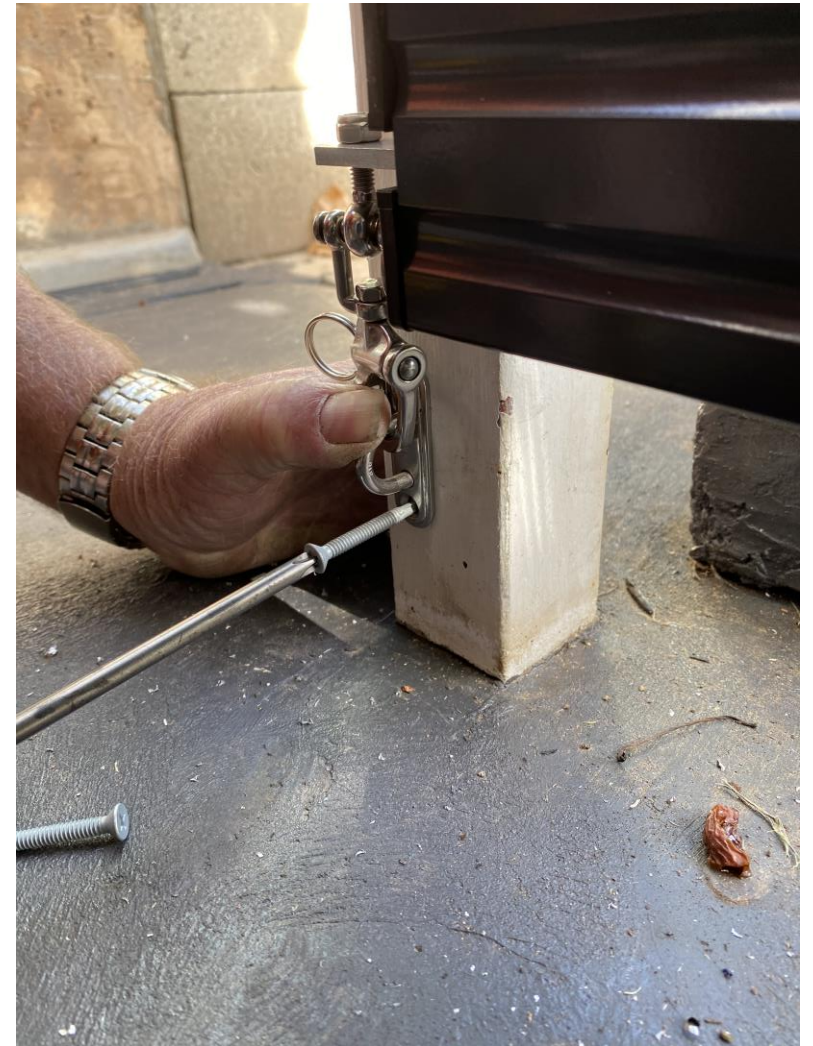


## FIX THE SADDLES

Carefully unwind the crank to bring blind all the way down.

Join the hook with a saddle and use gentle tension to position the saddle at its fixing point, then secure it.

Repeat on the opposite side.







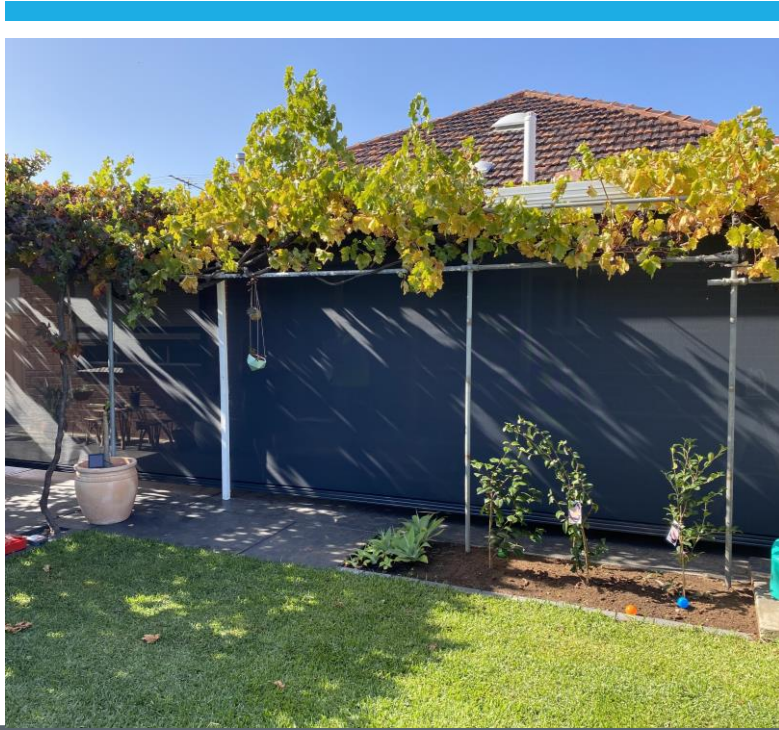
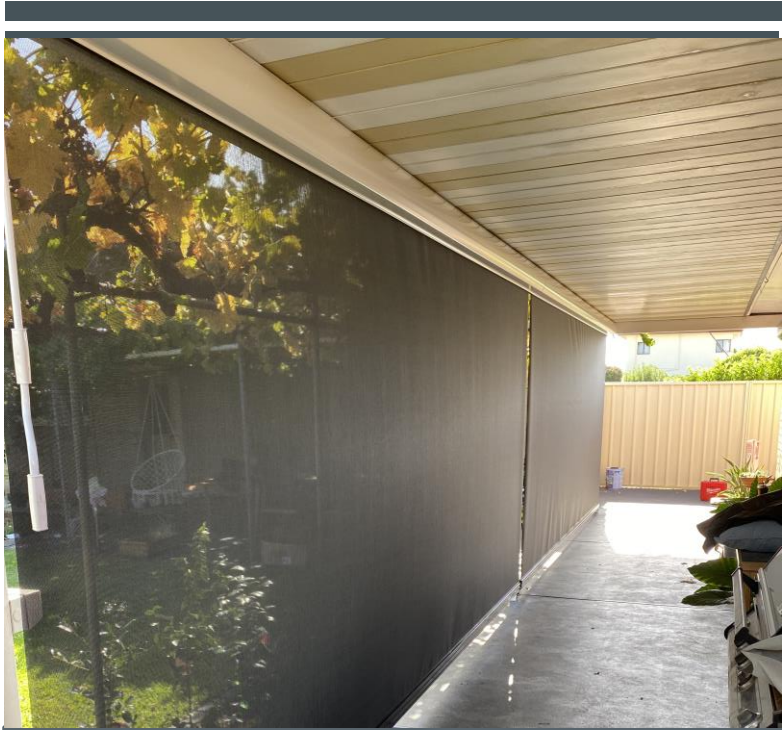
## TENSIONING THE HOOKS

*UNIQUE ADJUSTERS ENABLE YOU TO BALANCE THE TENSION ON BOTH SIDES OF THE BLIND*

- THE TONGUE CAN BE HAMMERED INWARDS TO ALIGN WITH THE SADDLE POSITION TO SUIT (AS SHOWN ABOVE)
- A THREADED LINK CAN BE TIGHTENED TO INCREASE THE TENSION ON THE LOOSE SIDE (AS SHOWN RIGHT)







USE THE CRANK TO PULL THE SKINS TAUT, PUT YOUR HEAD BOX COVERS ON AND  
**YOUR BLINDS ARE COMPLETE!**