

# Altus RTS & Sonesse RTS Programming



## 1 Select Channel

If you are using a multi channel remote, select the required channel.  
The channel must be selected prior to programming.

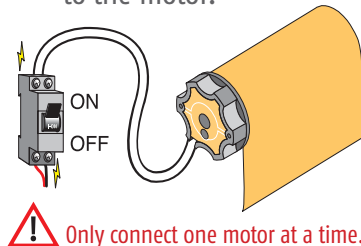
Continue to step 2...



## 2 Identify the correct motor mode

In order to identify which mode the motor is in, make sure that you pay attention to whether the product performs a jiggle when power is applied.

Switch on the power to the motor.



## 3 Motor Mode

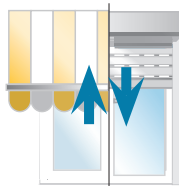
Did the product perform a jiggle?



YES - Go to step 4  
NO - Go to step 5

## 4 YES - jiggle

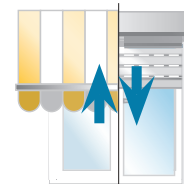
This means limits have already been set. Press and hold simultaneously the Up and Down button. The product should jiggle.



After the jiggle proceed to step 10.

## 5 NO - jiggle

Press and hold simultaneously the Up and Down button. The product should jiggle.



After the jiggle continue to step 6.

## 6 Check the correct direction of rotation

Press and hold the Down button.  
Does the product extend?

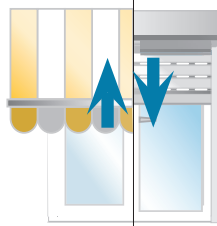


YES - The product extends while pressing the down button - Go to step 8

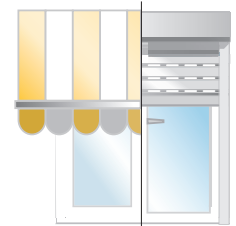
NO - The product retracts while pressing the down button - Continue to step 7

## 7 Reverse the direction of rotation

To reverse the direction of the motor, press and hold the **my** button until the product jiggles.



Press and hold the Down button to test that the motor direction is correct.



Continue to step 8



All Situo RTS Transmitters, Smoove RTS, Chronis RTS.  
Dry Contact Transmitters and 5 Channel RTS Transmitter (cannot be used to program).  
Soliris/Eolis RTS Sensor, Sunis/Eolis 3D RTS Sensor (cannot be used to program).

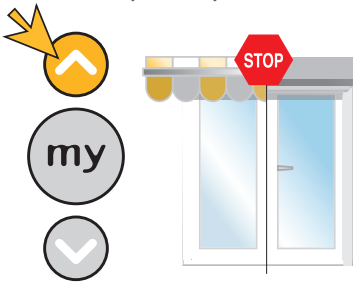
# Altus RTS & Sonesse RTS

## Programming

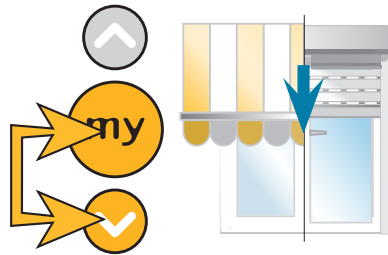


### 8 Record the Up limit position

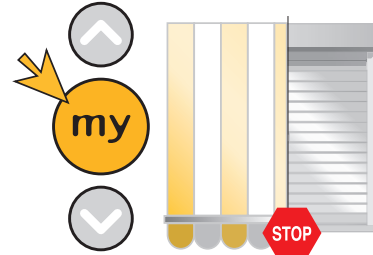
Use the Up button to operate the product until it reaches the desired Up limit position.



Press and hold the **my** and Down buttons until the product starts to extend/lower.

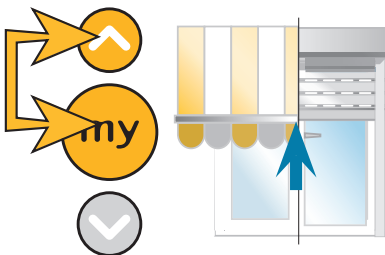


Stop the product at the desired limit position (adjust with Up or Down if required).

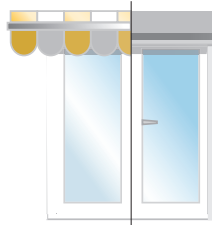


### 9 Record the Down limit position

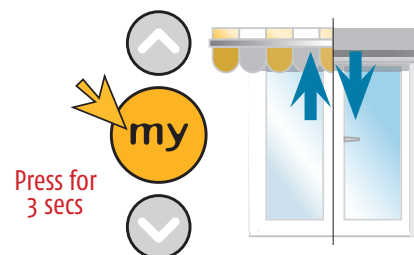
Press and hold the **my** and Up button until the product starts to retract/raise.



The product will automatically close and stop.



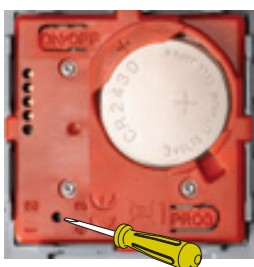
Press and hold the **my** button until the product jiggles to confirm the limit settings.



### The limits have been recorded

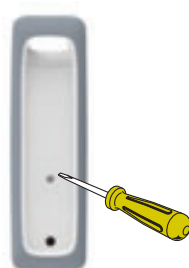
### 10 Programming the RTS control to the motor

Press the program button on the RTS control until the product jiggles.

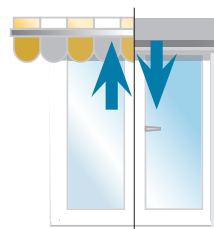


Smoove RTS

OR



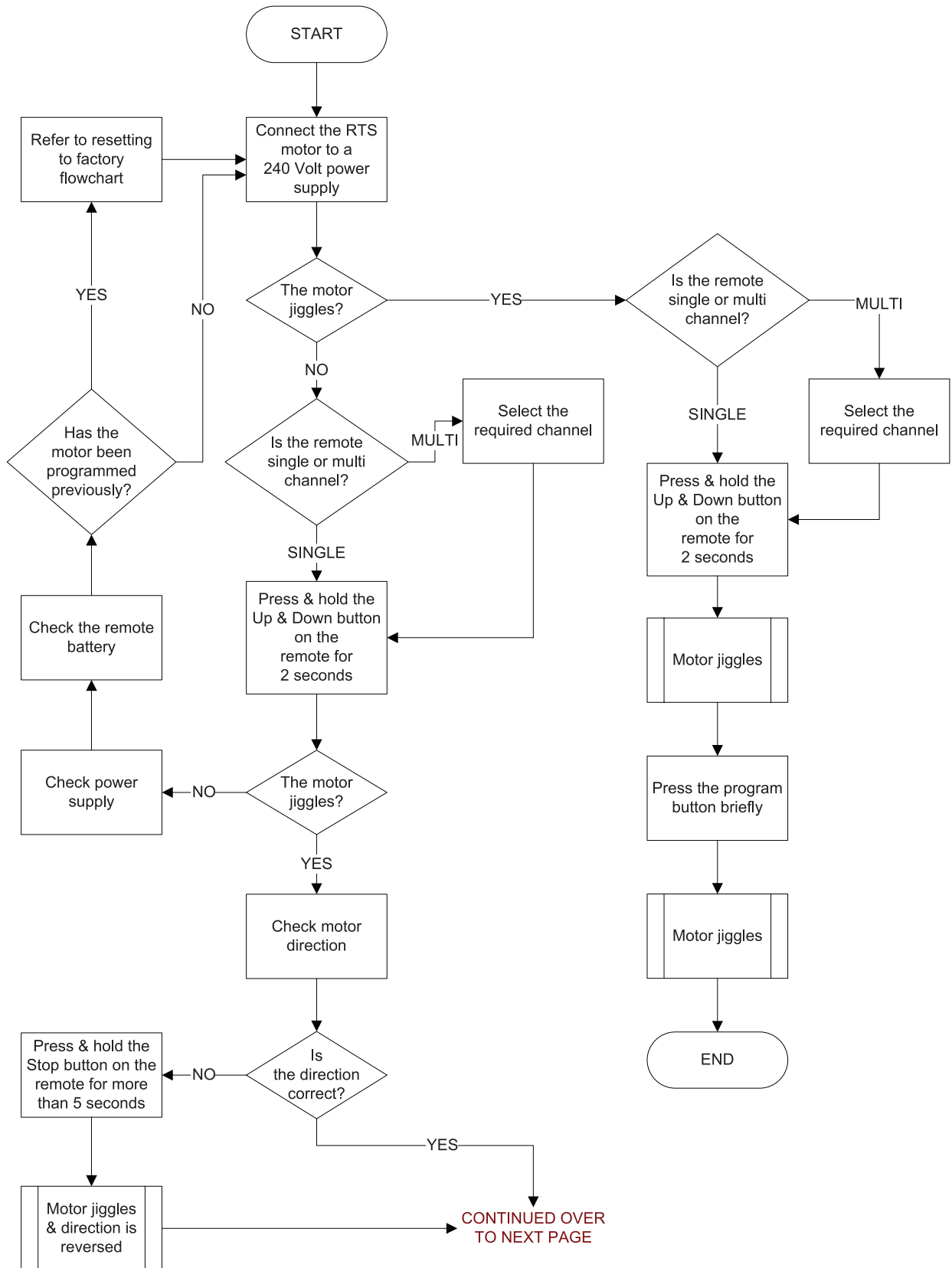
Situo RTS



jiggle = control recorded ✓

Check functionality Complete ✓

# Altus RTS & Sonesse RTS Programming



# Altus RTS & Sonesse RTS

## Programming



FROM PREVIOUS PAGE

