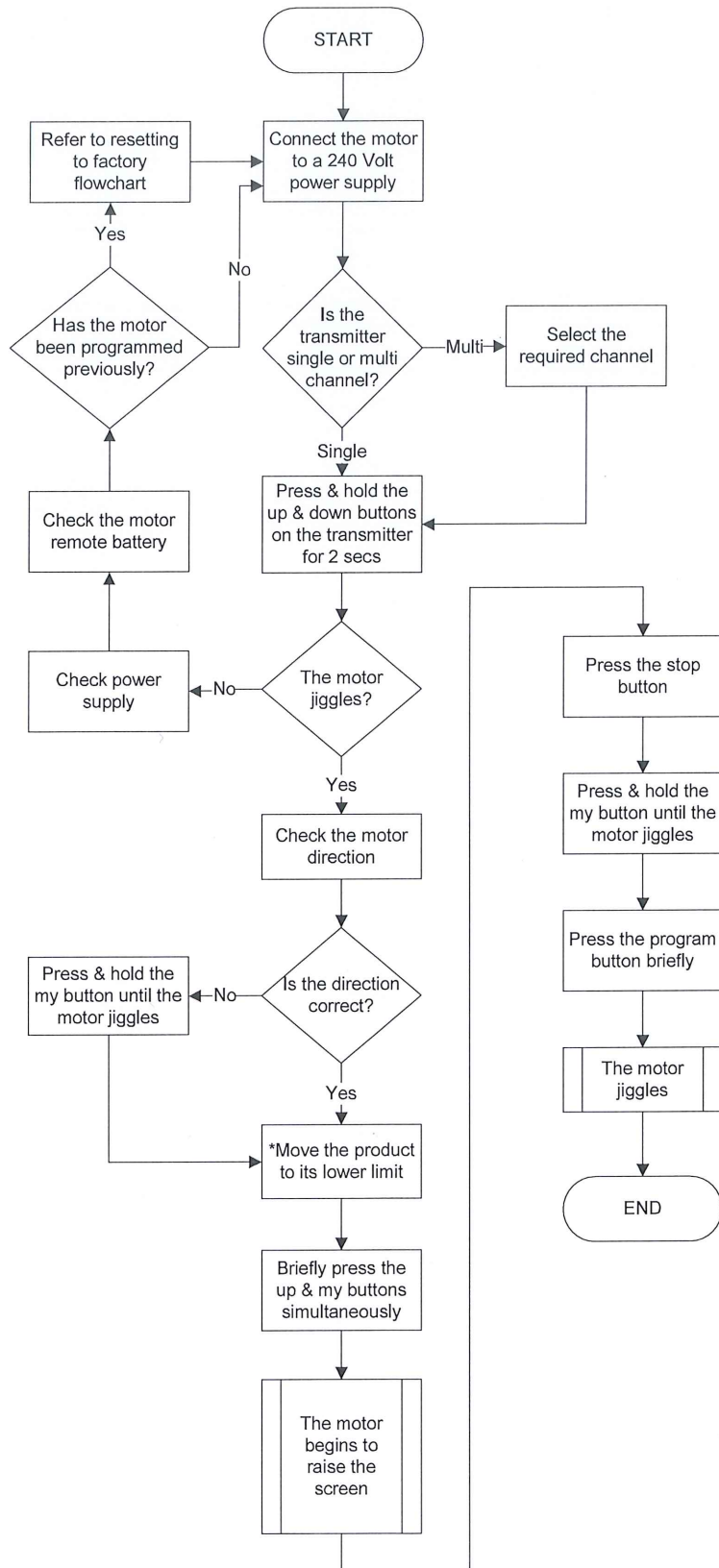


Maestria 50 RTS

Semi-automatic limit setting



Automatic setting at UP end limit is only compatible with screens featuring a hard stop.

*The motor will move continuously if the up or down buttons are held for more than a few seconds. Use the stop button to stop.

Obstacle detection works when the correct weight of the load bar is used in the application. Check with your product manufacturer if the obstacle detection does not work.

STOP = MY