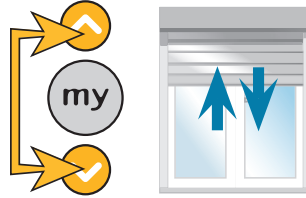


# Oximo RTS Programming



## 6 Setting Automatic Mode

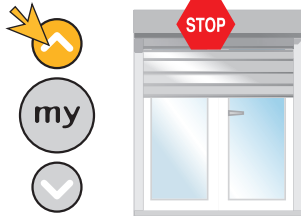
Press and hold simultaneously the Up and Down button. The product should jiggle.



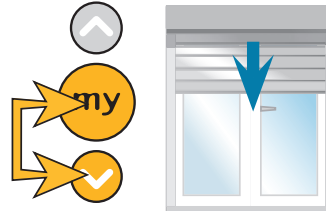
Go to step 9

## 7 Record the Up limit position

Use the Up button to operate the product until it reaches the Up limit position.



Press and hold the **my** and Down buttons until the product starts to lower.

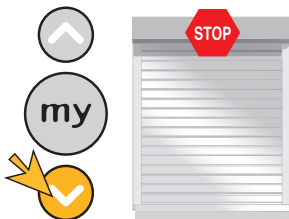


Press the **my** button briefly.

If Rigid Links are fitted, go to step 9, otherwise go to step 8.

## 8 Record the Down limit position

Use the Down button to operate the product until it reaches the Down limit Position.



Press and hold the **my** and Up buttons until the product starts to raise.

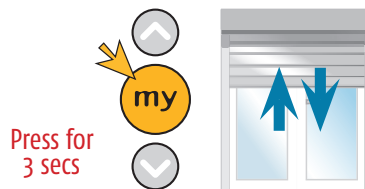


Press the **my** button briefly.

Go to step 9

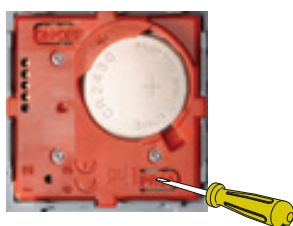
## 9 Confirm limit settings

Press and hold the **my** button until the product jiggles to confirm the limit settings.



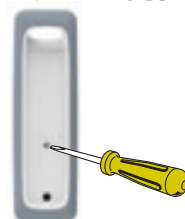
## 10 Programming the RTS control to the motor

Press the program button on the RTS control until the product jiggles.



Smoove RTS

OR

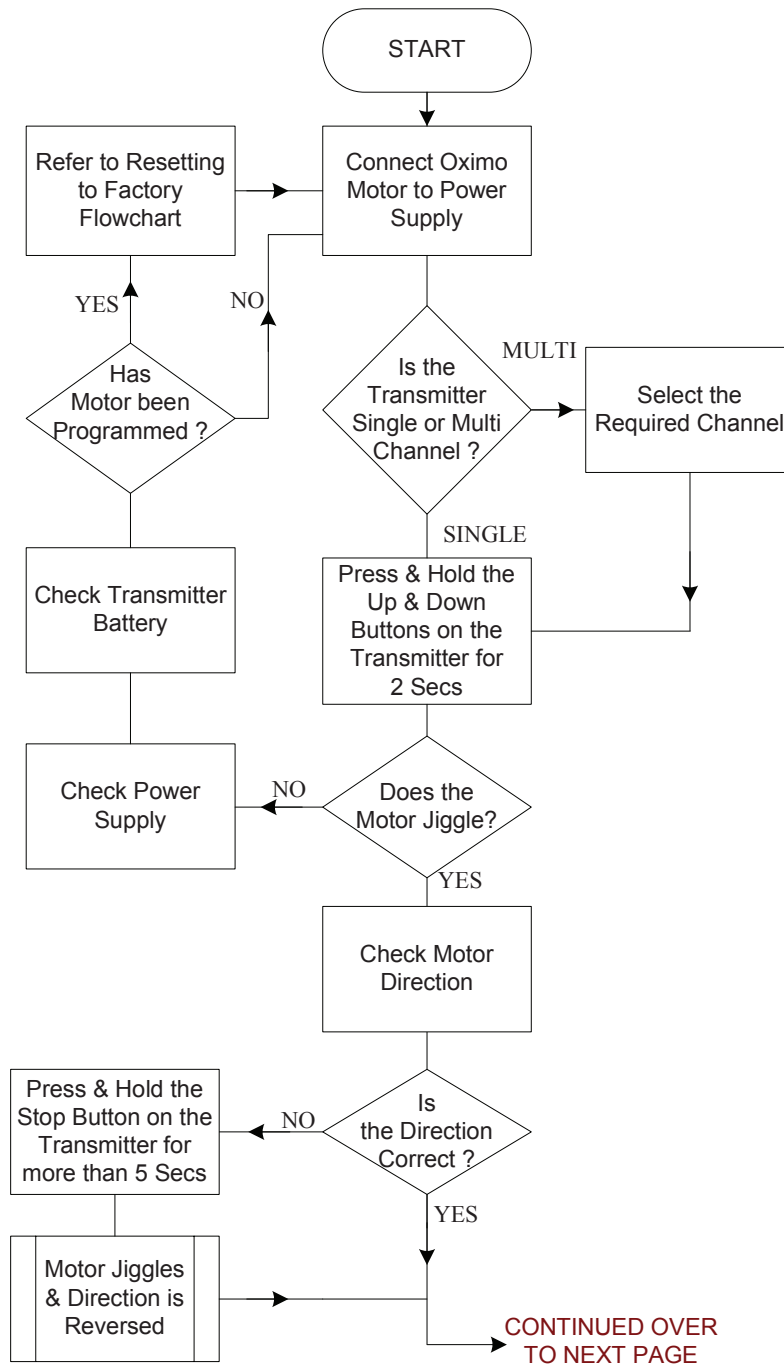


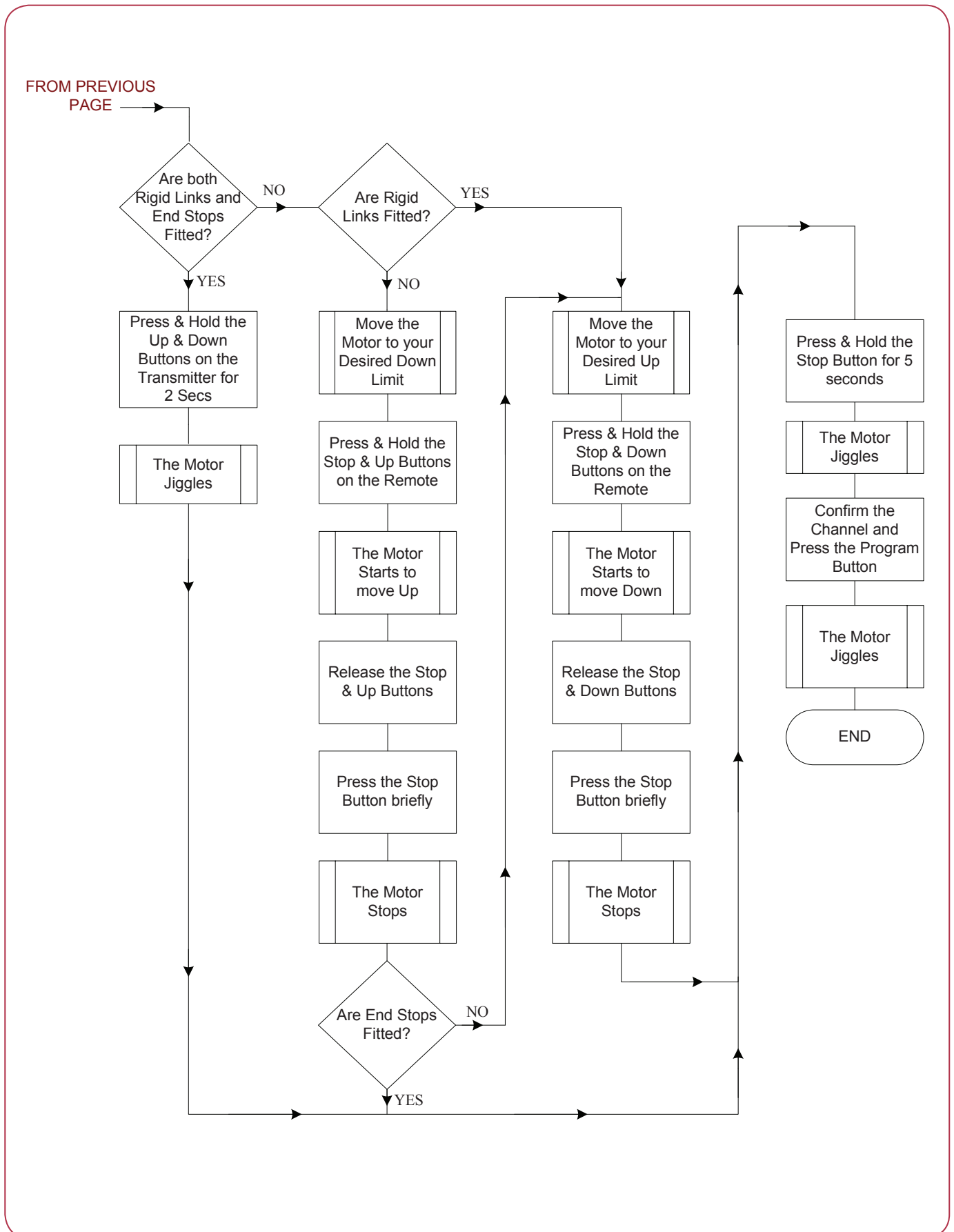
Situ RTS



jiggle = control recorded

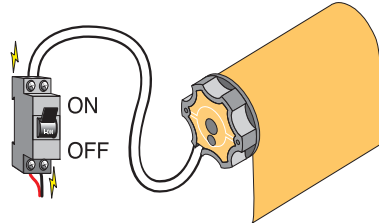






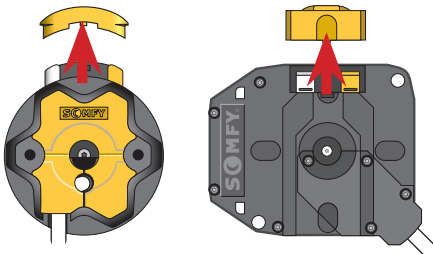
### 1 Power on the motor

Switch on the power to the motor.

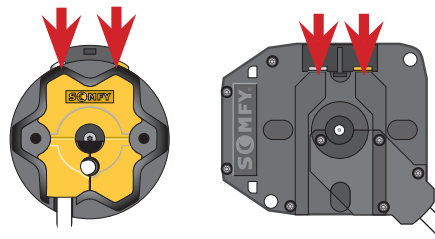


 Only connect one motor at a time.

### 2 Preparation



Remove the limit cap.



Press both limit buttons.

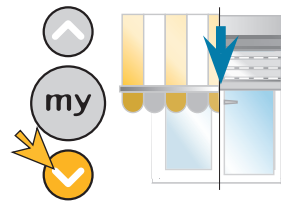
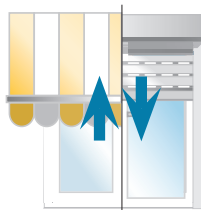
### 3 Check the direction of rotation



When using a multi-channel RTS control, remember to select the desired channel prior to programming.



Hold Up and Down together until it jiggles.



Press and hold the Down button. Does the product extend?

YES - The product extends while pressing the Down button - Go to step 8

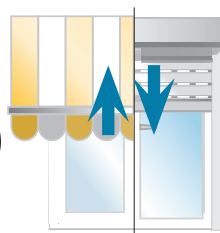
NO - The product retracts while pressing the Down button - Continue to step 7

### 4 Reverse the direction of rotation

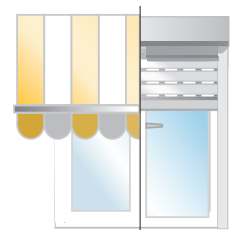
To reverse the direction of the motor, press and hold the **my** button until the product jiggles.



Press for 5 secs



Press and hold the Down button to test that the motor direction is correct.



Continue to step 6