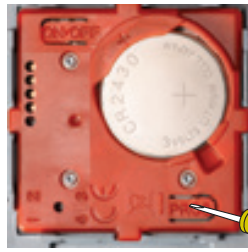


### 1 Set the motor in programming mode with an existing RTS control

RTS control  
already assigned  
to the motor



Smoove RTS

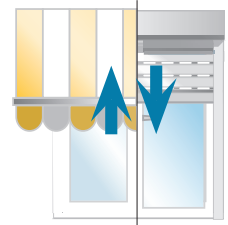
OR

Press for  
3 secs



Situlo RTS

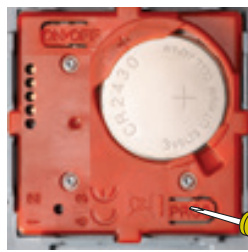
Press for  
3 secs



jiggle = motor ready  
to record new control

### 2 Program the RTS control

New RTS control  
to assign to  
the motor



Smoove RTS

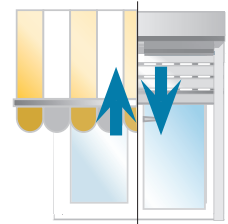
OR

Press for  
0.5 secs



Situlo RTS

Press for  
0.5 secs

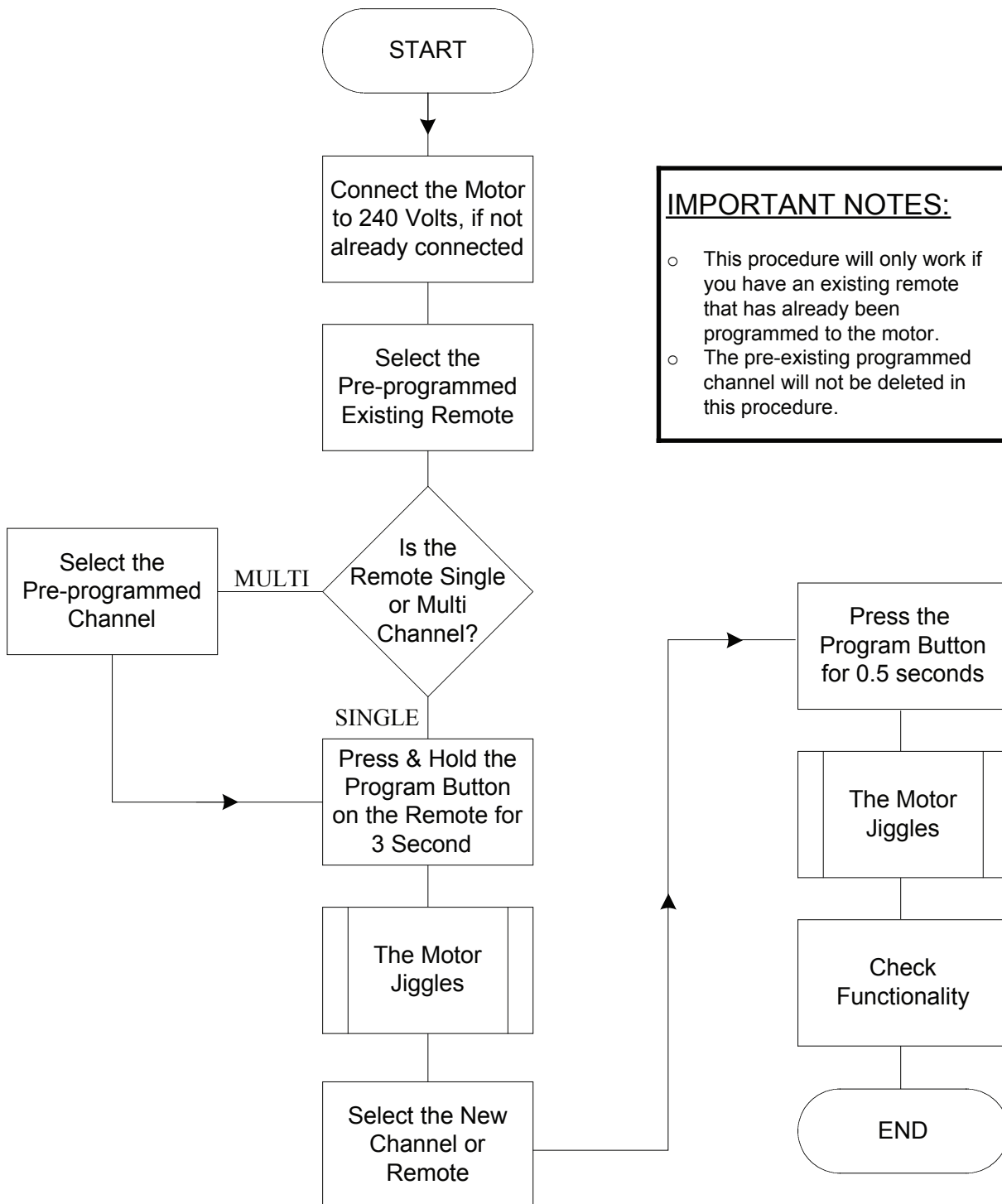


jiggle = new control  
recorded



When using a Multi-channel RTS control, remember to select the desired channel prior to programming.





### IMPORTANT NOTES:

- This procedure will only work if you have an existing remote that has already been programmed to the motor.
- The pre-existing programmed channel will not be deleted in this procedure.