

### 1 Set the motor in programming mode with an existing RTS control

RTS control  
already assigned  
to the motor



Smooove RTS

OR

Press for  
3 secs



Situ RTS

Press for  
3 secs



jiggle = motor ready  
to remove control

### 2 De-Program the RTS control

RTS control  
to be removed  
from the motor



Smooove RTS

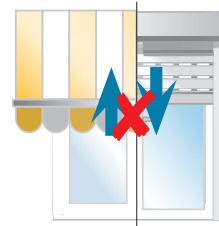
OR

Press for  
1 sec



Situ RTS

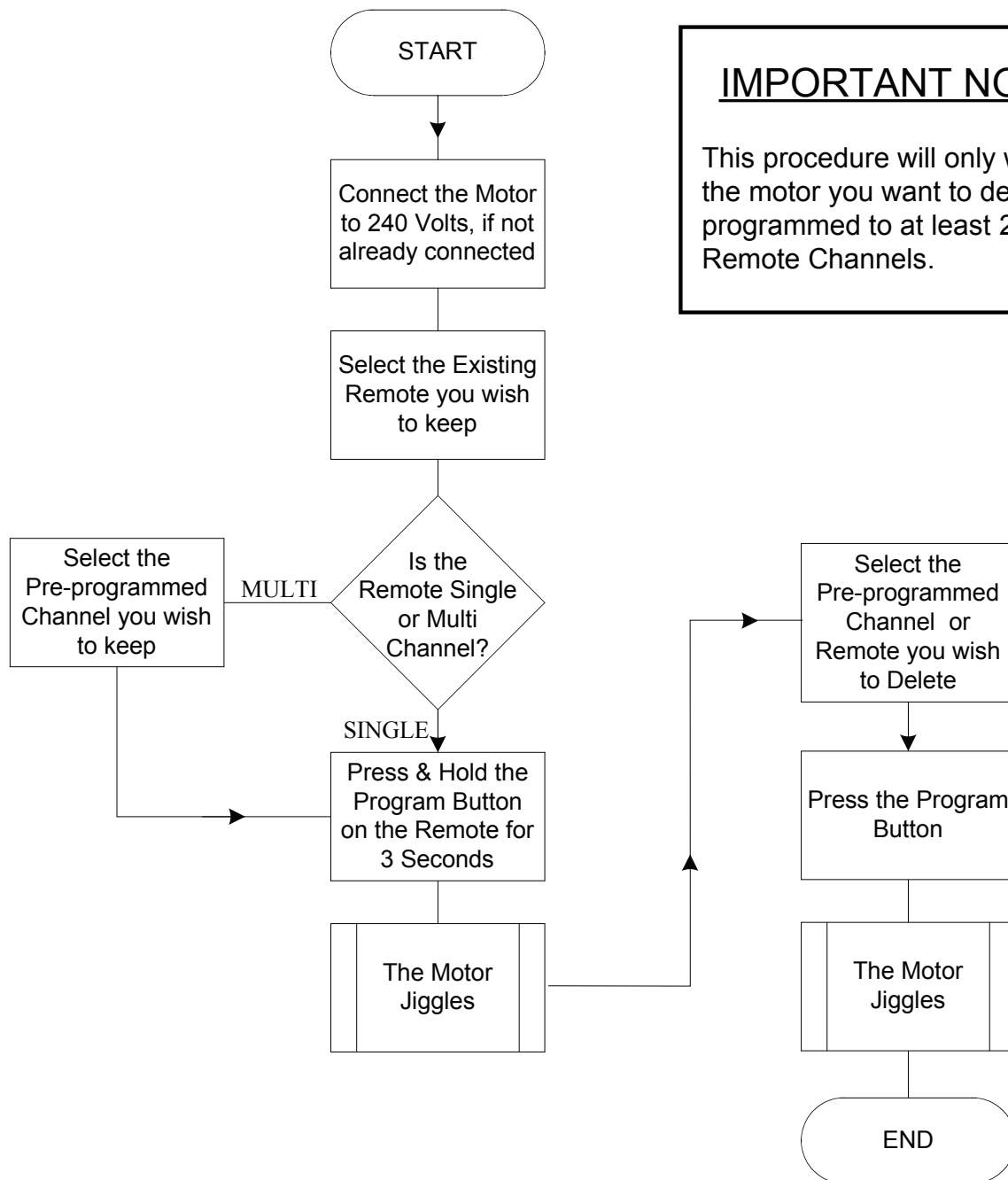
Press for  
1 sec



jiggle =  
control removed



Using this method you will not be able to delete the final remote programmed.  
Refer to 'erasing the memory of the motor' section to delete all remotes and sensors.



**IMPORTANT NOTE:**  
 This procedure will only work if the motor you want to delete is programmed to at least 2 Remote Channels.