

# Telis 6 Chronis RTS

## Initial setup

### 1 Wake up the remote



Select any button on the remote and the screen will turn on.



2 x LR03  
AAA 1.5 V

If nothing appeared on the screen, remove the battery cover and check the polarity and charge of the batteries.

### 2 Set Year



YEAR and SET appear on the display.



Use the navigation buttons to set year.



Briefly touch the selection button to save the year. MONTH and SET will appear on the display.



### 3 Set Month



Use the navigation button to set month.



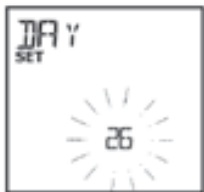
Briefly press the selection button to save month.

# Telis 6 Chronis RTS

## Initial setup



### 4 Set Day



DAY and SET will appear on the display. Use the navigation button to set the day.



Briefly press the selection button to save day.

### 5 Set Time



TIME and SET will appear on the display. Use the navigation button to set the current hour time (24 hour clock).



Briefly press the selection button to save current time for hour.



Use the navigation buttons to set the time for minutes.



Briefly press the selection button to save current time. AREA and SET will appear on the display.



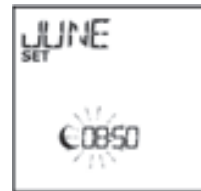
# Telis 6 Chronis RTS

## Initial setup

### 6 Select Area



Use the navigation buttons to set Area to OFF (for Aust & NZ).



Briefly press the navigation button to save area. JUNE and SET will appear on the display.

Setting sunset time in summer and winter is optional.  
To skip setting summer and winter sunset time continue to step 7.  
To set the sunset time in summer and winter, skip to step 8.

### 7 Skip setting winter and summer sunset time



X 4

Briefly press the selection button four times.  
Then move to step 10.

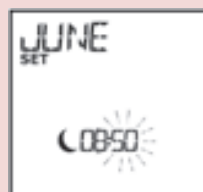
### 8 Set winter sunset time



Use the navigation buttons to set the sunset time for hour in winter.



Briefly press the selection button to save hour.



Use the navigation buttons to set the sunset time for minutes.



Briefly press the selection button to save sunset time in winter.

# Telis 6 Chronis RTS

## Initial setup



9

### Set summer sunset time



DEC and SET will appear on the display.



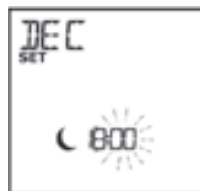
Use the navigation buttons to set the sunset time for hour in summer.



Briefly press the selection button to save hour.



Use the navigation buttons to set the sunset time for minutes.



Briefly press the selection button to save sunset time in summer.

10

### Sun sensors



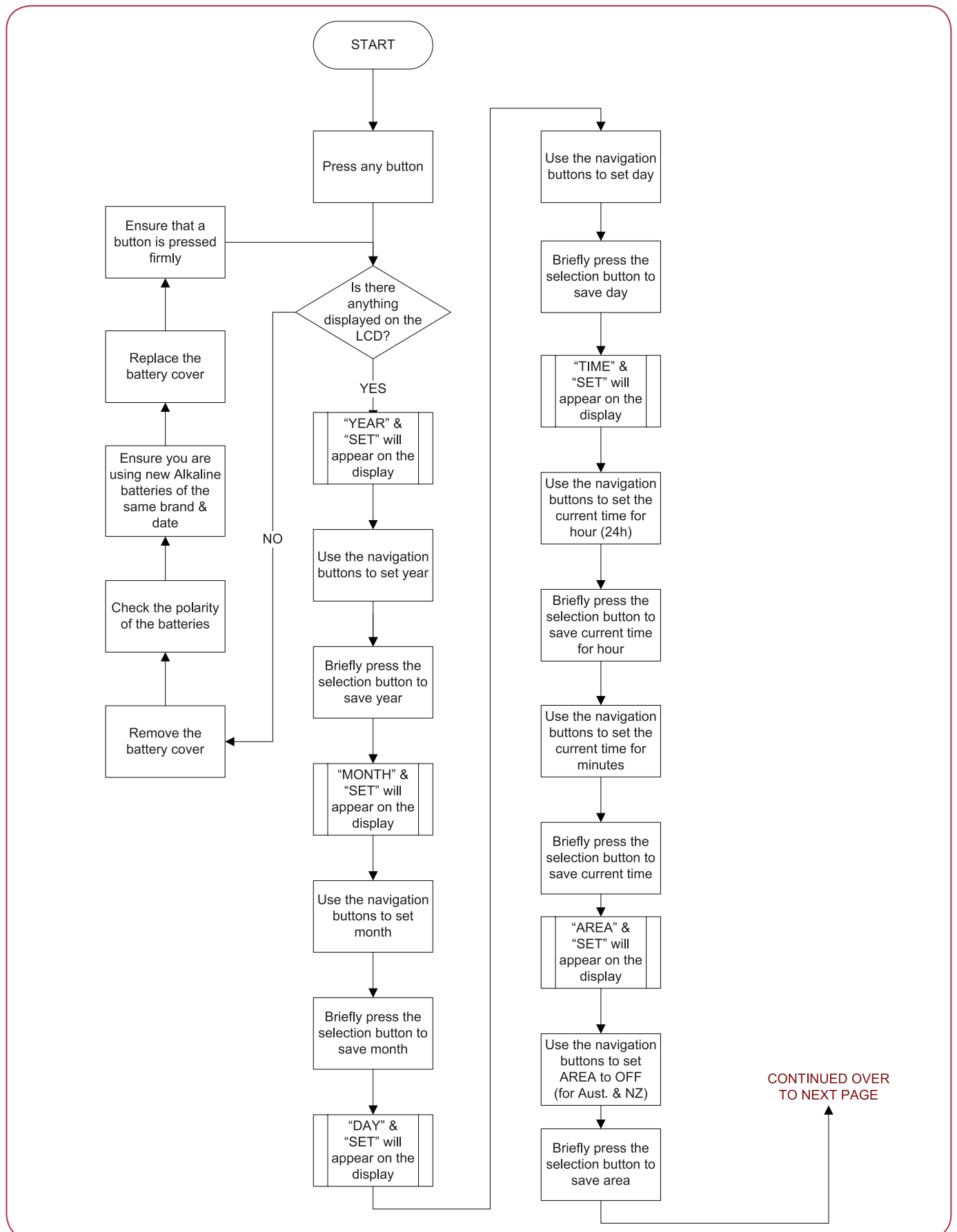
If there are sun sensors, use the navigation buttons to select either 'No Sun' or 'Sun'.



Briefly press the selection button to save.

# Telis 6 Chronis RTS

## Initial setup



# Telis 6 Chronis RTS

## Initial setup

