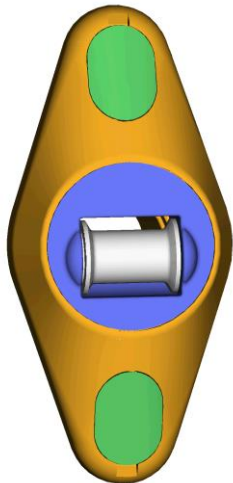
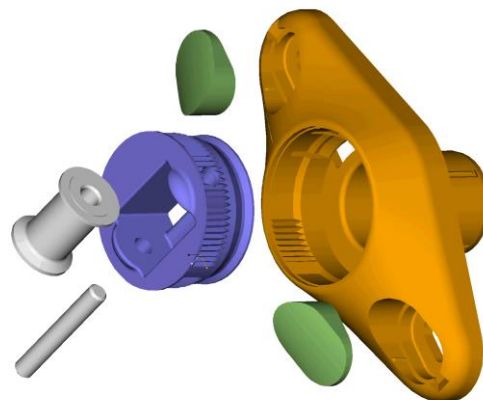


THE INSERT ROLLER.

Ozroll™ designed and a world first, this revolutionary control tape roller for manual shutters is known as the INSERT ROLLER. It has been developed specifically for ease of installation, minimising control tape wear and to be aesthetically pleasing.

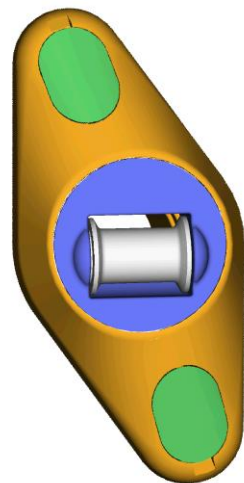
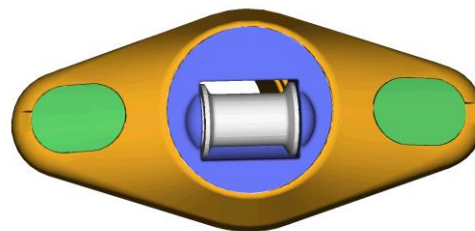


The design criteria was driven by the need for a high quality roller to minimise the wear on the control tape. The roller has retaining flanges either side that will move with the control tape rather than rubbing against it.



The insert part of the housing (coloured blue) can be removed at any time either before installation or after. This feature will allow for the roller to be removed without unscrewing the housing from the wall. The ability to remove the insert would be an advantage for servicing the shutter if for some reason the control tape needs to be changed.

The insert part of the housing (coloured blue) can also be rotated 360° in increments of 2.5°. This feature will allow for multiple types of installation whilst maintaining a neat appearance on the inside of the home.



By rotating the outer housing 15° it is possible to locate the top screw directly into a stud and still maintain a vertical roller. Lastly, the screw caps add that finishing touch that your customer has come to expect.

Note: The screw caps should be fitted only after you are confident of the installation. These caps are easily fitted if you locate the thinner end (towards the outside of the roller) first and then press into place.

The insert roller will be supplied in individual plastic bags containing the Outer Housing, two Hole Caps and the Inner Housing assembled with roller. Available in White only and the OZ

Roll™ Part Number is: **13.240.401** Patent Pending.